

LIFESAVER OWNERS MANUAL

9 Volt Battery Operated Smoke Alarm

Model 0905/0907

IMPORTANT: READ ALL INSTRUCTIONS BEFORE INSTALLATION

The smoke detector uses an extremely small amount of a radioactive element in the dual ionization chamber. Do not try to repair the smoke detector yourself. Refer to instructions for service.

⚠ WARNING REMOVAL OF BATTERY WILL RENDER THIS SMOKE ALARM INOPERATIVE.

RECOMMENDED LOCATION OF DETECTORS

- Locate the first detector in the immediate area of the bedrooms. Try to protect the exit path as the bedrooms are usually farthest from an exit. If more than one sleeping area exists, locate additional detectors in each sleeping area.
- Locate additional detectors to protect any stairway as stairways act like chimneys for smoke and heat.
- Locate at least one detector on every floor level.
- Locate a detector in every bedroom where a smoker sleeps.
- Locate a detector in every room where electrical appliances are operated (i.e. portable heaters or humidifiers).
- Locate a detector in every room where someone sleeps with the door closed. The closed door may prevent the alarm from waking the sleeper.
- Smoke, heat and other combustion products rise to the ceiling and spread horizontally. Mounting the detector on the ceiling in the center of the room places it closest to all points in the room. Ceiling mounting is preferred in ordinary residential construction.
- For mobile home installation select location carefully to avoid thermal barrier that may form at the ceiling. For more detail see Mobile Home Installation below.
- When mounting detector on the ceiling locate it at a minimum of 6" (15.24 cm) from the side wall and 2 feet (60.96 cm) from any corner (see Diagram A).
- When mounting detector on a wall, use an inside wall with the detector at a maximum of 12' (30.48 cm) below the ceiling and at least 2 feet (60.96 cm) from any corner (see Diagram A).
- Put smoke detector at both ends of a bedroom hallway. If the hallway is more than 30 feet long.

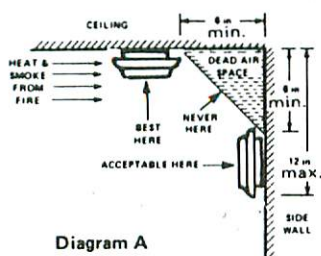
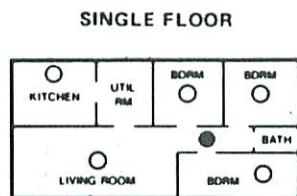
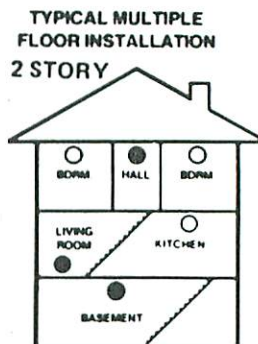


Diagram A



- Smoke Detectors for Minimum Protection
- Smoke Detectors for Additional Protection

Diagram B



MOBILE HOME INSTALLATION

Mobile homes built in the past five to seven years have been designed and insulated to be energy efficient. Install smoke detectors as recommended (refer to RECOMMENDED LOCATIONS and Diagram A).

In mobile homes that are not well insulated compared to present standards, extreme heat or cold can be transferred from the outside through poorly insulated walls and roof. This may create a thermal barrier which can prevent smoke from reaching a smoke detector mounted on the ceiling. In such units, install smoke detector on inside partition between 6" (16 cm) and 12" (31 cm) from the ceiling. (Diagram A)

If you are not sure about the insulation in your mobile home, or if you notice the walls and ceilings are either hot or cold, install detector on an inside wall. For minimum protection install one detector close to the bedrooms. For additional protection, see SINGLE FLOOR PLAN IN Diagram B.

This smoke alarm covered by one or more of the following patents:
U.S. Patent No. D-247665, 4075487, 4083037. Other patents pending.

⚠ WARNING LOCATIONS TO AVOID

Do Not Locate Your Detector in:

- The kitchen — smoke from cooking might cause an unwanted alarm.
- The garage — products of combustion are present when you start your automobile.
- In front of forced air ducts used for heating and air conditioning and other high air flow areas.
- In the peak of an "A" frame type of ceiling.
- In areas where temperatures may fall below 40°F or above 100°F.
- In dusty areas, dust particles may cause smoke detector to false alarm or fail to alarm.
- In very humid areas or near a bathroom, moisture can cause false alarm.
- Near fluorescent lights — electronic "noise" may cause nuisance alarms.

FALSE ALARMS

The smoke alarm is designed to minimize false alarms. Smoking will not normally set off the alarm unless smoke is blown directly into the detector. Combustion particles from cooking may set off the alarm if the detector is located close to the kitchen. Large quantities of combustion particles are generated from spills or broiling.

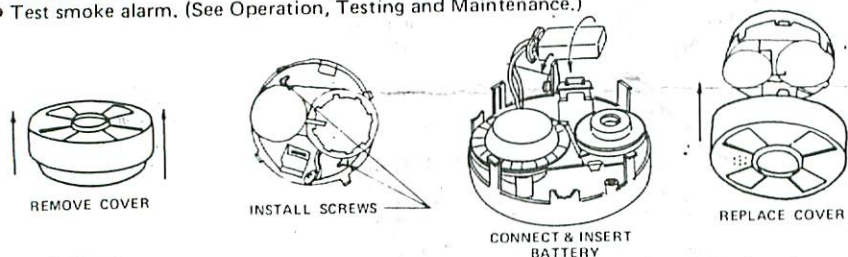
If the detector does alarm, check for fires first. If a fire is discovered, get out and call the fire department. If no fire is present, check to see if one of the reasons listed above may have caused the alarm.

INSTALLATION ⚠ CAUTION READ CAREFULLY

- Detach cover by pulling until it unlatches from the smoke alarm base.
- Using smoke alarm base as pattern, trace outlines of the two keyhole slots onto mounting surface.
- Drill pilot hole in center of small end of each keyhole slot in mounting surface.
- Insert and tighten mounting screws in pilot holes until within about 1/8" from the mounting surface.
- Mount smoke alarm base making sure that screws are positioned in the small ends of keyholes and tighten the screws.
- Snap on battery wire clip and use the battery to rotate and hold the "Battery Reminder Finger" down as you insert the battery into the battery holder.
- Replace cover by aligning projecting tab on cover with pocket on base and pushing cover until it latches. Note the small arrows on outside of cover and base to aid in alignment. Your smoke alarm is now operating.

⚠ CAUTION IF YOU DO NOT PUSH THE "BATTERY REMINDER FINGER" DOWN properly, the cover will not latch in place.

- Test smoke alarm. (See Operation, Testing and Maintenance.)



⚠ CAUTION Early warning fire detection is best achieved by the installation of fire detection equipment in all rooms and areas of the household as follows: A smoke detector installed in each separate sleeping area (in the vicinity of — but outside of the bedrooms) and heat or smoke detectors in living rooms, dining rooms, kitchens, hallways, attics, furnace rooms, closets, utility storage rooms, basements and attached garages.

OPERATION, TESTING & MAINTENANCE

OPERATION: The smoke alarm is operating once the battery is connected. When products of combustion are sensed, the unit sounds a loud pulsating alarm until the air is cleared.

TESTING: Test by pushing test button on cover and holding button down for 2 seconds minimum. This will sound alarm if all electronic circuitry, horn and battery are working. If no alarm sounds, the unit has a defective battery or other failure. You can also test alarm by blowing smoke into it. Test alarm weekly to assure proper operation.

Erratic noise or low sound from alarm may indicate a defective detector. Return it for service.

⚠ WARNING Test smoke detector operation after RV or mobile home vehicle has been in storage, before each trip and at least once per week during use.

MAINTENANCE: The smoke detector is virtually maintenance free. However, under dusty conditions, a vacuum hose may be used to clear the sensing chamber of dust. Do not remove smoke detector cover when vacuum is used.

BATTERY REPLACEMENT

The smoke alarm is powered by one 9V carbon-zinc battery (alkaline batteries may also be used). The battery should provide operation for at least one year under normal operating conditions. The smoke alarm has a low battery monitoring indicator which will "chirp" at approximately 30-40 second intervals for a minimum of 7 days. Replace battery when chirping occurs. Use only the following 9 volt batteries (available at most drug, hardware or electronic parts stores) for replacement:

Carbon-zinc type: Eveready 216 or 1222; Gold Peak 1604P or 1604S
Alkaline Type: Eveready 522; Duracell 1604

⚠ WARNING Use only batteries specified. Use of different batteries may cause a malfunction of the smoke alarm.

SERVICE

The smoke alarm uses a very small amount of a radioactive element which is safely contained within the chamber assembly. If the smoke detector is defective in any way, do not tamper with the unit. Return the unit to manufacturer for servicing. (See warranty for instructions on in-warranty returns.) There will be a service charge for repairing units out of warranty.

WARNING LIMITATIONS OF SMOKE DETECTORS

SMOKE DETECTORS ARE DEVICES THAT CAN PROVIDE EARLY WARNING OF POSSIBLE DEVELOPING FIRES AT A REASONABLE COST; HOWEVER, DETECTORS HAVE SENSING LIMITATIONS. IONIZATION TYPE DETECTORS OFFER A BROAD RANGE OF FIRE SENSING CAPABILITY BUT ARE BETTER AT DETECTING FAST FLAMING FIRES THAN SLOW SMOLDERING FIRES. PHOTOELECTRIC DETECTORS SENSE SMOLDERING FIRES BETTER THAN FLAMING FIRES. HOME FIRES DEVELOP IN DIFFERENT WAYS AND ARE OFTEN UNPREDICTABLE. NEITHER TYPE OF DETECTOR (PHOTOELECTRIC OR IONIZATION) IS ALWAYS BEST AND A GIVEN DETECTOR MAY NOT ALWAYS PROVIDE WARNING OF A FIRE. ALSO, SMOKE DETECTORS DO HAVE CERTAIN LIMITATIONS. FOR BATTERY POWERED DETECTORS THE BATTERY MUST BE OF THE SPECIFIED TYPE, IN GOOD CONDITION AND INSTALLED PROPERLY. AC POWERED DETECTORS WILL NOT OPERATE IF AC POWER HAS BEEN CUT OFF SUCH AS BY AN ELECTRICAL FIRE OR AN OPEN FUSE. SMOKE DETECTORS MUST BE TESTED REGULARLY TO MAKE SURE THE BATTERIES AND DETECTOR CIRCUITS ARE IN GOOD OPERATING CONDITION.

SMOKE DETECTORS CANNOT PROVIDE AN ALARM IF SMOKE DOES NOT REACH THE DETECTOR. THEREFORE, SMOKE DETECTORS MAY NOT SENSE FIRES STARTING IN CHIMNEYS, WALLS, ON ROOFS, ON THE OTHER SIDE OF A CLOSED DOOR OR ON A DIFFERENT FLOOR. IF THE DETECTOR IS LOCATED OUTSIDE THE BEDROOM OR ON A DIFFERENT FLOOR, IT MAY NOT WAKE UP A SOUND SLEEPER. THE USE OF DRUGS OR ALCOHOL MAY ALSO IMPAIR HEARING OF THE SMOKE ALARM. FOR MAXIMUM PROTECTION A SMOKE DETECTOR SHOULD BE INSTALLED IN EACH SEPARATE SLEEPING AREA AND ON EVERY LEVEL OF A HOME.

ALTHOUGH SMOKE DETECTORS CAN HELP SAVE LIVES BY PROVIDING AN EARLY WARNING OF A FIRE, THEY ARE NOT A SUBSTITUTE FOR AN INSURANCE POLICY. HOME OWNERS AND RENTERS SHOULD HAVE ADEQUATE INSURANCE TO PROTECT THEIR LIVES AND PROPERTY.

GOOD SAFETY HABITS CAUTION

There are situations where a smoke detector may not be effective to protect against fire as stated in the NFPA standard 74. For instance:

- a) smoking in bed;
- b) leaving children home alone; and
- c) cleaning with flammable liquids, such as gasoline.

DEVELOP AND PRACTICE A PLAN OF ESCAPE (HOME/TRAVEL)

Basics of escape plan

- ☐ Make a floor plan indicating all doors and windows and at least two escape routes from each room. Second story windows may need a rope or chain ladder.
- ☐ Have a family meeting and discuss your escape plan, showing everyone what to do in case of fire.
- ☐ Determine a place outside your home where all of you can meet, if a fire occurs.
- ☐ Familiarize everyone with the sound of the Smoke Alarm and train them to leave your home when they hear it.
- ☐ Identify children's bedrooms with red stickers, place in the upper left corner of the windows. They are obtainable from your local fire department.
- ☐ Practice a fire drill at least every six months. Practice allows you to test your plan before an emergency. You may not be able to reach your children. *It is important that they know what to do!*

WHAT TO DO WHEN THE ALARM SOUNDS

- ☐ Leave immediately by your plan of escape. Every second counts, so don't waste time getting dressed or picking up valuables.
- ☐ In leaving, don't open any inside door without first feeling its surface. If hot, or if you see smoke seeping through cracks, *don't open that door!* Instead, use your alternate exit. If inside door is cool, place your shoulder against it, open it slightly and be ready to slam it shut if heat and smoke rush in.
- ☐ Stay close to the floor if air is smoky. Breathe shallowly through a cloth, wet it if possible.
- ☐ Once outside, go to your selected meeting place and make sure everyone is there.
- ☐ Call the fire department from your neighbor's home — *not from yours!*
- ☐ Don't return to your home until fire officials say that it is all right to do so.

Further information on fire safety can be obtained in a pamphlet titled "In A Fire Seconds Count" published by the NFPA, Batterymarch Park, Quincy, Mass 02269.

NATIONAL FIRE PROTECTION ASSOCIATION REQUIRED PROTECTION

For your information, the National Fire Protection Association's Standard 74, Section 2-1 provides information regarding the smoke detection equipment required within the family living unit. Section 2-1, 1.1. reads as follows:

"Smoke detectors shall be installed outside of each separate sleeping area in the immediate vicinity of the bedrooms and on each additional story of the family living unit including basements and excluding crawl spaces and unfinished attics. The provisions of 2-1, 1.1. represent the minimum number of detectors required by this standard. It is recommended that the householder consider the use of additional smoke or heat detectors for increased protection for those areas separated by a door from the areas protected by the required smoke detectors under 2-1, 1.1. above. The recommended additional areas are living room, dining room, bedroom(s), kitchen, attic (finished or unfinished), furnace room, utility room, basement, integral or attached garage, and hallways not included in 2-1, 1.1. above. However, the use of additional detectors remains the option of the householder."

The equipment should be installed in accordance with the National Fire Protection Association's Standard 74. (NFPA, Batterymarch Park, Quincy, Mass 02269)

NOTIFY YOUR LOCAL FIRE DEPARTMENT AND INSURANCE COMPANY OF YOUR SMOKE ALARM INSTALLATION



FIVE YEAR LIMITED WARRANTY

Fyrnetics, Inc. warrants to the Purchaser that the enclosed smoke alarm (but not the battery) will be free from defects in material, workmanship or design under normal use and service for a period of five years from the date of purchase. The obligation of Fyrnetics, Inc. under this warranty is limited to repairing or replacing the smoke alarm or any part which we find to be defective in material, workmanship or design, free of charge to the customer, upon sending the smoke alarm with proof of date of purchase, postage and return postage prepaid, to Warranty Service Department Fyrnetics, Inc., 1021 Davis Road, Elgin, Illinois 60123.

This warranty shall not apply to the smoke alarm if it has been damaged, modified, abused or altered after the date of purchase or if it fails to operate due to improper maintenance or inadequate A.C. or D.C. electrical power.

THE LIABILITY OF FYRNETICS, INC. OR ANY OF ITS PARENT OR SUBSIDIARY CORPORATIONS ARISING FROM THE SALE OF THIS SMOKE ALARM OR UNDER THE TERMS OF THIS LIMITED WARRANTY SHALL NOT IN ANY CASE EXCEED THE COST OF REPLACEMENT OF SMOKE ALARM AND, IN NO CASE, SHALL FYRNETICS, INC. OR ANY OF ITS PARENT OR SUBSIDIARY CORPORATIONS BE LIABLE FOR CONSEQUENTIAL LOSS OR DAMAGES RESULTING FROM THE FAILURE OF THE SMOKE ALARM OR FOR BREACH OF THIS OR ANY OTHER WARRANTY, EXPRESS OR IMPLIED, EVEN IF THE LOSS OF DAMAGE IS CAUSED BY THE COMPANY'S NEGLIGENCE OR FAULT.

Since some states do not allow limitations on the duration of an implied warranty or do not allow the exclusion or limitation of incidental or consequential damages, the above limitations or exclusions may not apply to you. While this warranty gives you specific legal rights, you may also have other rights which vary from state to state.

Also, Fyrnetics, Inc. makes no warranty, express or implied, written or oral, including that of merchantability or fitness for any particular purpose, with respect to the battery.

The above warranty may not be altered except in writing signed by both parties hereto.

CONTENTS OF THIS MANUAL

- RECOMMENDED LOCATIONS OF SMOKE ALARMS
- INSTALLATION INSTRUCTIONS
- OPERATION, TESTING & MAINTENANCE
- LIMITATIONS OF SMOKE DETECTORS
- GOOD SAFETY HABITS
- PLAN OF ESCAPE FOR HOME OR TRAVEL
- NFPA PROTECTION STANDARD 74, SECTION 2-1
- SERVICE AND WARRANTY

UL LISTED



FYRNETICS INC.

1021 Davis Road, Elgin, Illinois 60123

120161-001 3/89